

Di Foster and Steve Stefanopoulos
Malvern Historical Society



WALK INTO HISTORY 4

Six more great walks in Stonnington

WALK INTO HISTORY 4

Walk into History 4 is the final in the series and will guide you through some of Stonnington's most picturesque streets as you discover the fascinating history of each area. Take the time to enjoy the architecture of the buildings and the magnificent tree lined streets. From some of the most ornate boom style houses to the earliest pubs, each walk features photos of many sites.

As additional Stonnington Heritage Markers are installed throughout the City, you will find further information about many of the places of interest.

This book resulted from a series of walks undertaken by members of the Malvern Historical Society and the authors would like to thank the Committee – in particular – Jane Nigro, Peter Frawley and Roxanne Dennis. Special thanks to Julia Tregear and walker Zena Roslan.

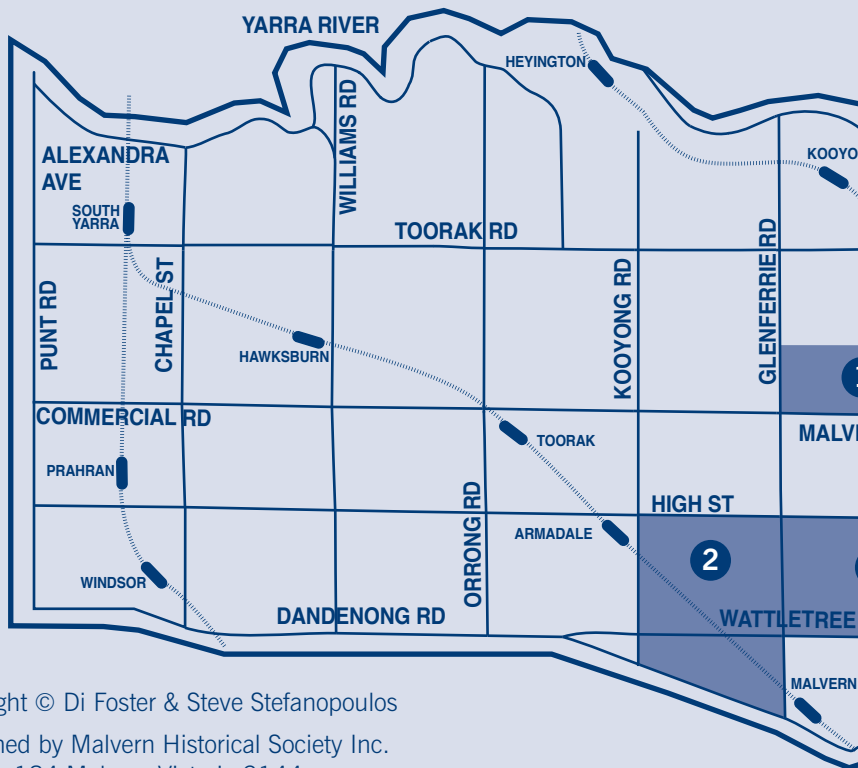
Walk into History 4 was generously funded by a community grant from the East Malvern Community Bank Branch - Bendigo Bank.

*Di Foster & Steve Stefanopoulos
July 2007*

Malvern Historical Society Inc.
www.vicnet.net.au/~malvern

Stonnington Local History Service
www.stonnington.vic.gov.au/history





Copyright © Di Foster & Steve Stefanopoulos

Published by Malvern Historical Society Inc.

PO Box 184 Malvern Victoria 3144

National Library of Australia

Cataloguing-in-Publication entry:

Foster, Di.

Walk into history 4: Six more great walks in Stonnington.

ISBN 0 957 9586 3 0

1. Walking - Victoria - Stonnington - Guidebooks.

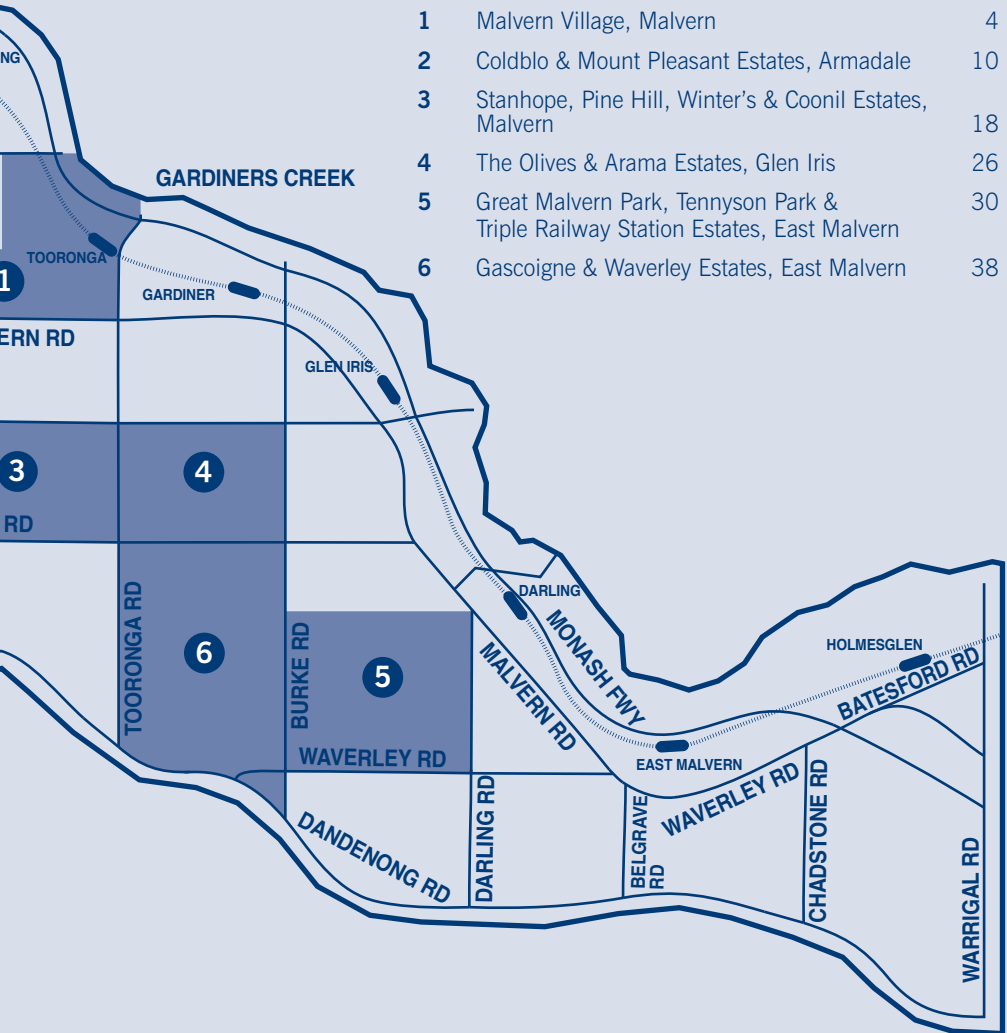
2. Stonnington (Vic.) - Guidebooks.

3. Stonnington (Vic.) - Buildings, structures, etc.

I. Stefanopoulos, Steve. II. Malvern Historical Society. III. Title.

919.451047

Contents

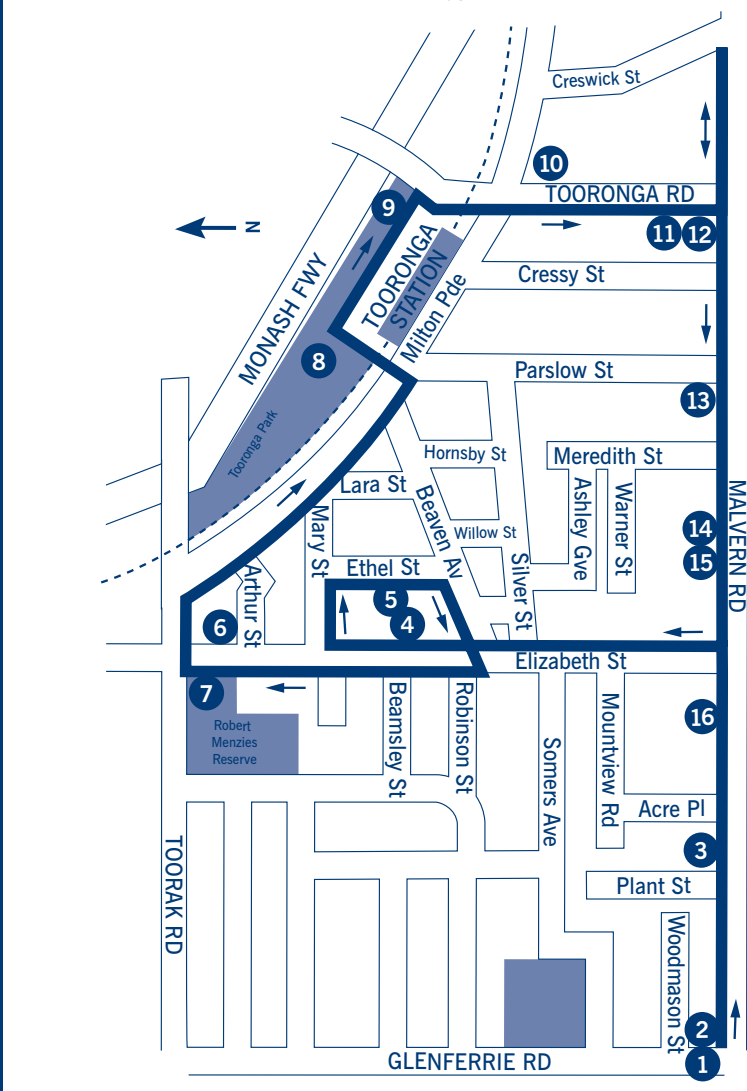


The map shows the Malvern area with six numbered walk routes. Route 1 is in the north-west, Route 2 is in the north, Route 3 is in the west, Route 4 is in the central-west, Route 5 is in the central-east, and Route 6 is in the south-west. The map includes labels for Gardiners Creek, Tooronga, Glen Iris, Malvern, East Malvern, and Holmesglen. Major roads shown include Tooronga Rd, Burke Rd, Waverley Rd, Dandenong Rd, Darling Rd, Belgrave Rd, Chadstone Rd, Warrigal Rd, Malvern Rd, Monash Fwy, and Batesford Rd.

Walk		Page
1	Malvern Village, Malvern	4
2	Coldblo & Mount Pleasant Estates, Armadale	10
3	Stanhope, Pine Hill, Winter's & Coonil Estates, Malvern	18
4	The Olives & Arama Estates, Glen Iris	26
5	Great Malvern Park, Tennyson Park & Triple Railway Station Estates, East Malvern	30
6	Gascoigne & Waverley Estates, East Malvern	38

1

Malvern Village, Malvern



Start	Melways	Walk time
Malvern Hill Hotel, cnr Glenferrie & Malvern Rds, Toorak	59 C6	1.5 hours - hilly

The undulating land and the proximity to natural springs attracted settlers and travelers to Malvern Hill. Businesses were established and houses were erected between the Malvern Hill Hotel and the Butchers' Arms Hotel along Malvern Rd.

1. The Malvern Hill Hotel was built for English barrister Charles Bruce Skinner in 1853 to attract purchasers to the Malvern Hill Estate. (See Heritage Plaque) The hotel was – *a single storey, eleven roomed weather-boarded building, lined, canvassed and papered, containing a spacious cellar, bar, five parlours, four bedrooms, a detached kitchen, a six stall stable, sheds and water closet, enclosed within a three rail fence.* The present Colonial style building was erected in 1861 and the corner bar was added in the 1880s although the decorative Victorian style façade was removed in the 1930s.
2. From 1859 the Woodmason family owned land opposite the hotel where William Woodmason (Malvern Shire President 1883/84 & Councillor 1870-1893) cultivated a successful market garden and grazed his prize winning Jersey herds. A brick house, stables and milking sheds were erected for Woodmason's Melrose Dairy. In 1913, the Woodmason Estate was created with housing allotments fronting Woodmason St, Glenferrie Rd and Somers Ave. In 1923, Woodmason's Iceworks and a row of shops were erected in Glenferrie Rd. (See Heritage Plaque)
3. Between the two hotels, a number of businesses including a bootmaker, baker, butcher, milliner and grocer were established in shop fronts, generally attached to modest houses. Workers cottages were also erected in Acre Pl and Plant St. Thomas Robinson (Malvern Shire Councillor 1885-1895), having been 'stuck up' by bushrangers at Glen Iris soon after his arrival in 1852, erected a house and shop in the 1870s at 1225 Malvern Rd, adjacent to his vineyard.

In 1853, William Ilton migrated to Australia and settled in Elizabeth St. Ilton established a wheelwrights and was later joined by his sons Aaron, also a wheelwright and David, a blacksmith. In 1890, Ilton's timber cottage and workshop were replaced by two brick cottages, which were demolished in the 1980s for the widening of Elizabeth St. In 1889, John Joseph Dulfer, blacksmith to Governor Sir Reginald Talbot, took over Ilton's blacksmith's forge, now in Malvern Rd (formerly Commercial Rd).

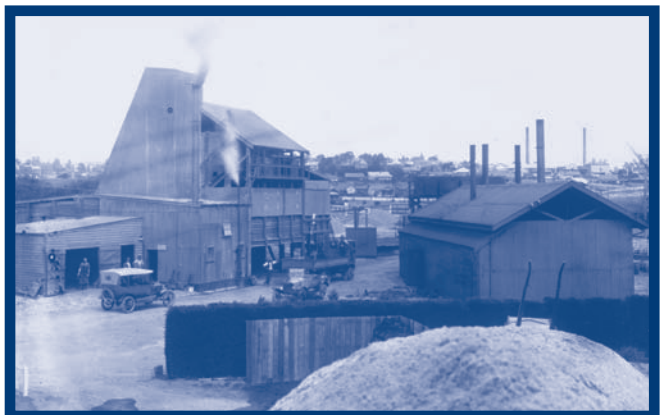
1

Malvern Village, Malvern

4. Somers Ave (formerly State St) was created in 1912 as part of the State Park Estate and was named after Governor Lord Arthur Somers, resident of *Stonington* 1926-1931. Robinson St was formed as part of Rubicon Estate in 1923. Beamsley St was created as part of the East View Estate in 1919 and named after the Beamsley family who ran real estate agencies in Malvern. The Italianate style 44 Elizabeth St, *Glen Laxton* (46), *Inverloch* (48), *Gracedale* (50), *Ilala* (52), *Elleston* (54) and *Noorie* (56) were erected soon after the subdivision of the Tooronga Estate in 1890.
5. 23 Ethel St is an Italianate style house with elaborate cast iron verandah erected in 1891 for Lucy Nicholas. 17, erected for James Urquhart in 1892, is a Queen Anne style house, dominated by a central entrance tower and Edwardian detailing. *Mararoa* (7), erected for Theodore McIntosh in 1891, is an Italianate style house, featuring a central projecting bay and a return bull-nose verandah.
6. *Tooronga* (72 Elizabeth St), an Italianate style house with cast iron verandah, was erected on the Tooronga Station Estate for Robert Salkfield in 1891.
7. Around 1902, the City Brick Works Company Pty Ltd purchased land on the corner of Toorak Rd and Elizabeth St and constructed a large brick kiln, chimney and associated buildings. Quarrying was discontinued in the 1950s and in 1956 the Malvern Council leased the quarry as a tip, which was gradually filled. In 1968, the land was purchased by the Melbourne and Metropolitan Board of Works (MMBW) and in 1973 it was transferred to the Malvern Council in compensation for land lost in building the South Eastern Freeway. In 1974, the Sir Robert Menzies Reserve, named after the Prime Minister of Australia and founder of the Liberal Party (see Heritage Plaque), was opened on the site of the quarry. The brickworks continued to operate until the early 1980s and around 1986, the brickworks were demolished and the land subdivided into housing allotments fronting Elizabeth St.

-
8. In May 1912, around 16 acres, known as the Gardiners Creek Reserve or Tooronga Park, were purchased by Malvern Council. The Tooronga Football Club was established in 1919 by the Tooronga Progress Association. In 1934, the Malvern Amateur Football Club was established as an offshoot of the local YMCA group. The Tooronga Cricket Club was formed in the late 1910s at a meeting held in the waiting room of the Gardiner Railway Station. All clubs played at Johnson Oval, named after Cr John Johnson (Malvern Mayor 1944/45, 1950/51, 1953/54 & 1959/60 and Councillor 1938-1964). The pavilion, relocated from the Malvern Cricket Ground in the 1920s, was named after cricket captain and vice-president - Edward James Frost. The clubs were forced to relocate in the 1980s when the South Eastern Freeway was extended and then widened.

 9. By 1916 part of Tooronga Park fronting Tooronga Rd (formerly Nash Rd) included an asphalt works, stables, yard and a four roomed house. In the late 1990s, "The Depot" was closed. In 2006 the Stonnington Animal Pound was opened and in 2007, the Stonnington Depot was opened. The rail line, which opened in 1890, was electrified in 1922 and in the 1970s the present station replaced the earlier weatherboard building at Tooronga.



*Malvern Council
Works Depot, c.1927*

1 Malvern Village, Malvern



Staunton's Bus Service, 1929

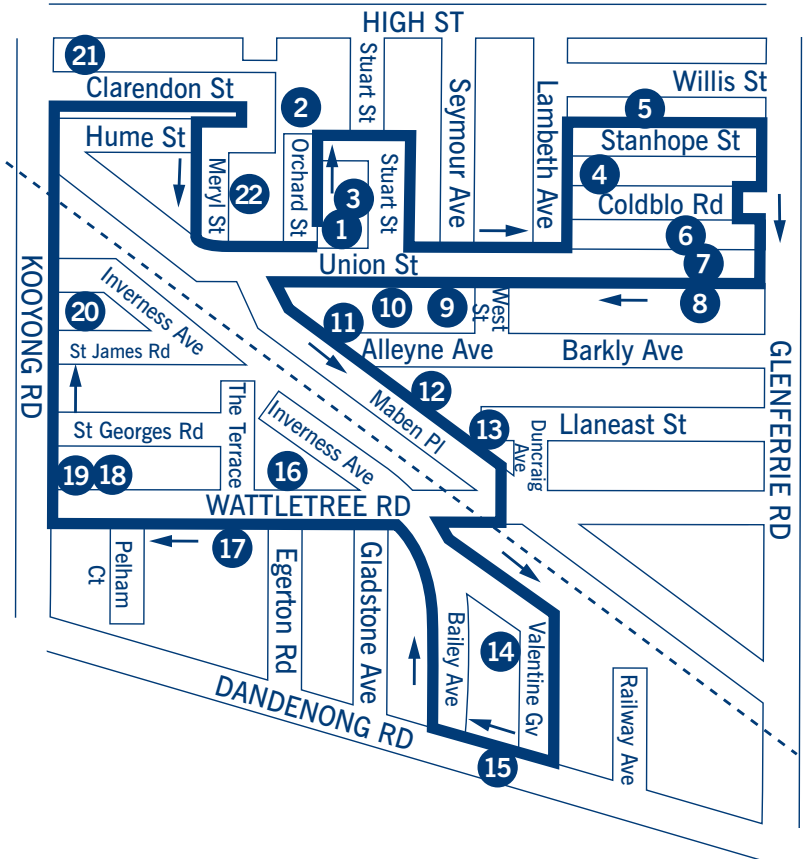
10. The Staunton family who lived on the south east corner of Tooronga Rd and Milton Pde, ran a bus service along Tooronga Rd between Malvern and Tooronga Stations.
11. Around 1917 a small weatherboard hall was built at 255 Tooronga Rd for the Salvation Army. By 1967 the hall was occupied by the United Pentecostal Church and a flat at the rear was used as a Sunday School.
12. In April 1915, the tram from St Kilda to Burke Rds, along Commercial & Malvern Rds, was opened. New shops were erected and businesses were established including a laundry, signwriter, estate agent, draper, milliner, saddler, florist, dentist, jeweller and dressmaker. Most of the first floor shop façades and some of the ground floor copper, brass and leadlight shop windows have been retained along Malvern Rd between Edgar & Parslow Sts.

1438-1446 is a row of two storey shops featuring original painted signs on the rendered parapet. 1449-1455 is a row of two storey Edwardian style shops. The bungalow style motor garage on the north east corner of Malvern & Tooronga Rds was erected in the 1920s. The former ES&A Bank on the north west corner and the Post Office at the rear, were designed by architects Oakley & Parkes in 1928 and feature a classically detailed and heavily decorated façade. 1421 & 1423 feature unusual, light coloured, polychromatic brickwork. 1374 features a Dutch gable and a fish scale designed, pressed metal roof over a projecting first floor bay window.

1415-1419 Malvern Rd features decorative red brick façades with pilasters that extend above the parapet. The parapet is broken in the centre, allowing the Marseilles-tiled roof to spill through the gap to form an awning above the projecting bay windows, which are supported on decorative timber brackets. 1417 retains its original brass framed window display, glazed green tiles and terracotta tiled recessed entrance. Note the original dentistry featuring glazed tiles and leadlight windows on the corner of Cressy St. 1373-1383 is a row of two storey Edwardian style shops.

13. In 1922, five brick shops and a hall were erected in Malvern Rd cnr Parslow St (formerly Scott St). In 1931 Tooronga Hall, also known as Tooronga Palais, was a venue for weddings. In 1938 the hall housed the Tooronga Palais Social Club and in 1948 it was known as the Malvern Grove Palais. In 1951, the building housed the Malvern Grove Ballroom and Coffee Lounge. In the early 1990s, the Tooronga Palais Dance Hall was redeveloped. Parslow St was named after Eli Parslow (Malvern Mayor 1902/03).
14. In 1856, Matthew Stephens operated a butchers shop on the north side of Malvern Rd. During the 1860s, Stephens' operated a slaughterhouse on the surrounding 29 acres and from 1865, owned and operated the Butchers Arms Hotel. In the 1870s Richard, Matthew's son, took over the hotel, which was later renamed the Council (Club) Hotel. From 1889, John Coleman ran the renamed Malvern Vale Hotel (1321). John's obituary in 1940 describes the publican as "an exemplary citizen and hotelkeeper". Coleman's descendants tell stories of the boxing ring in the hotel's stables and the SP bookie. A robbery at the hotel in the 1950s made headlines in *The Sun*.
15. In the 1920s, a taxi depot for Yellow Cabs occupied 1305.
16. In 1946, a moderne style factory for Peerless Mica P/L was erected at 1247-1251 Malvern Rd on the site of Bickham's Tennis Courts. The company was initially involved in the exploration and mining of mica and then in processing and manufacturing. Mica is resistant to heat and is used instead of glass in windows for ovens. The factory was demolished in 2006.

2 Coldblo & Mount Pleasant Estates, Armadale



Start	Melways	Walk time
Union Street Gardens, Union St, Armadale	59 A8	2 hours - flat

The construction of the railway from South Yarra to Oakleigh in 1879 stimulated development in Armadale, named after James Munro's (Gardiner Shire Councillor 1871-1874 and Shire President 1872/73) native village in Scotland. In 1876 Munro moved into *Armadale* (117 Kooyong Rd) and in the 1880s established the Federal Building Society and the Real Estate Mortgage and Deposit Bank. In 1891, the Building Society and the Bank went into voluntary liquidation and Munro who had become Premier of Victoria in 1890, resigned in 1892. He was released by the Insolvency Court when it became clear that he could not pay any of his debts.

1. By the 1870s, Thomas Kempton had brickyards on both sides of Union St and used clay bricks made locally to build *Dean Cottage*, on the site of Union Street Gardens. In 1897 the Malvern Council acquired Allen's Clay Pit, which had been used to dispose of domestic garbage, to extend Orchard St (formerly Foulds Ave) north to Hume St. In the 1920s, a furniture removalist occupied the red brick warehouse at 7 Orchard St. The Council purchased land for the gardens from 1891-1939. In 1925, the pavilion and two tennis courts were opened. By 1935 there were five, "well lit" tennis courts and the following year, Garden St, which ran through the park was removed. The Harrier's Club used the gardens until a Citizen's Committee took over the park and had a playground installed in 1922 which was supervised by "play mistress" Miss Picking for 14 years.
2. The Malvern Memorial Free Kindergarten, designed by architect Horace Tribe was erected in 1952. The economical building, a forerunner of its type, featured vertical boards, skillion roof and a playroom featuring a wall of windows, a colour scheme of dark mushroom pink and bright yellow and indirect lighting from globes shining onto the insulating paper on the ceiling.
3. The brick warehouses at 3-7 Stuart St (formerly Earl St) were built in stages between 1905-1912 and were occupied by a furniture store and packers in the 1920s.

2 Coldblo & Mount Pleasant Estates, Armadale



*Bro. Otto and Boxer,
Cold Blo, c. 1913*

4. Barrister Robert Wilmot Sitwell, had *Cold Blo* [sic.], a five-roomed, brick house erected on thirteen acres of land fronting Barkly Rd (now Glenferrie Rd) in 1855. Sitwell had cherries, strawberries, grapes, figs, plums, apples, pears, peaches and apricot trees interspersed with vegetables, planted amongst the fernery and fountain, together with an avenue of poplars along Barkly Rd. When broker, Alfred Edward Clarke (Malvern Shire President 1887-1889 and Councillor 1879-1892) purchased *Coldblo* in 1868, it included a coach house, stables, piggery and fowl yard. In 1892, the property was subdivided into sixty seven allotments forming the Coldblo Estate and Coldblo Rd. In 1901, *Coldblo* was purchased by the Vincentian Priests and from 1907–1911, was leased to Wade Sparrow, who conducted Roxburgh College. In 1912, three De La Salle Brothers arrived in Malvern and began teaching in St Joseph's Parish Hall prior to moving into their new school, designed by architect Augustus Andrew Fritsch in Stanhope St. In 1926 *Coldblo* was demolished and in 1929 the school building was sold to the Melbourne & Metropolitan Tramways Trust and houses the Tramways Museum.
5. 17 & 19 Stanhope St are two Victorian style houses with gothic features including block fronted façades, corrugated iron roofs, pressed metal gables above a projecting bay with fish scale shaped slate roof tiles, and gothic style bargeboards and ogee profile verandah roof.

*First tram leaving
Malvern Tram
Depot, 1910*



6. On 7 December 1909, the Prahran & Malvern Tramways Trust's Chairman, Alexander Cameron, laid the foundation stone of the depot. Designed by architect Leonard J Flanagan in conjunction with the Trust's electrical engineers, Noyes Brothers Pty Ltd., the depot comprised of offices, amenities, workshops and six track car shed. The first tramlines along High St, from Charles St, Prahran to Tooronga Rd, Malvern, and via Glenferrie & Wattletree Rds to Burke Rd, East Malvern were opened on 30 May 1910. The triangular shaped, administration building was erected in the 1920s followed by the northern car shed and western substation. (See Heritage Plaque)
7. In 1899, the Salvation Army hall on the corner of Glenferrie Rd & Bell St, was relocated to (75) Union St by horse and drays. In 1917, a Young People's Hall was erected at the rear of the main hall, which was later faced with a red brick façade. On 5 March 1960, a new cream brick citadel was opened which was later refurbished and re-opened on Remembrance Day 1988.
8. The Misses (Lizzie & Theresa) Smyths Ladies School accommodating 27 students, opened in the early 1890s at *Bayswater* (80). English, French, Latin, drawing, reading, writing, arithmetic, grammar and geography were taught.
9. In 1869, a weatherboard Union Church was built on the west corner of Union (formerly Place St) & West Sts. In 1891, a two storey shop and residence was built for Merriman's Dairy (44).

2 Coldblo & Mount Pleasant Estates, Armadale

10. The first brickworks in Union St was owned by Henry Atkinson Cawkwell (Gardiner Shire Councillor 1869-1875) who manufactured tessellated tiles for domestic houses and State Parliament House. In 1858 Robert Thomson and his son George, also established a brickworks in Union St.
11. From 1905, builders William Maben and Walter Brooks erected an almost intact row of Federation style houses along the south (10-25) side of Union St and the north (1-17) and south (4-16) sides of Alleyne Ave. Each of the houses built are identical in style, with subtle difference in the timber fretwork on the verandah, gable decoration and the location of the projecting bay.
12. Maben PI was named after William Maben, a carpenter and joiner who emigrated from Scotland to New Zealand in 1873. In 1881 he arrived in Melbourne and soon established a business as a builder working from the railway yards between Wattleree & Glenferrie Rds. In 1989, the former Drill [Army] Hall in Maben PI, used by the Citizens Military Force and the Citizens Military Force D Command 5th Infantry Brigade, was sold by the Commonwealth Government and the land redeveloped.
13. Prior to 1868, *Belmont*, a single storey, brick house was erected on the north west corner of Wattleree Rd and Duncraig Ave. In 1884, architect Frederick Williams designed an extension to the renamed *Duncraig* for James Hunt, secretary of the Modern Permanent Building Society. *Duncraig* was demolished in 1965.



Duncraig, c.1890

14. Prior to 1856, a brick house of 6 rooms including a cellar, kitchen, stables, coach house and wood cottage, was erected on 13 acres in Dandenong Rd for William Smith. By the 1890s, the two storey *Garden House* was owned by builder and developer William Valentine Bailey (Malvern Mayor 1903/04 and Councillor 1900-1906). In 1901, Bailey subdivided the surrounding land creating Valentine Gve and Bailey Ave and designed and built most of the Edwardian style houses, which are identical in style, with subtle difference in the façades and verandahs. *Garden House* (10 Valentine Gve), was demolished in 1970.

15. Soon after the construction of the tramway in 1910, the municipalities of Malvern, Prahran, St Kilda and Caulfield together with the Prahran & Malvern Tramways Trust developed a plan to beautify Dandenong Rd. A number of Federation style timber rest houses designed by Leonard Flannagan, and ornamental tramway poles were erected and a four lane wide avenue of plane trees were planted. Malvern and Caulfield also planted Canary Island Palms. Ornamental garden beds were planted at key intersections including Hawthorn/Glenferrie Rds where some early rockery remains. The poles and shelter are the earliest remaining in Melbourne and are on the Victorian Heritage Register.



Dandenong Rd, c.1911

2 Coldblo & Mount Pleasant Estates, Armadale

16. In 1901, Maben purchased *The Pines*, erected in 1868, and subdivided the land into allotments fronting (19-31) Inverness Ave, (1-3) The Terrace and (55-67) Wattletree Rd. Between 1901–1903 Maben erected all the Edwardian style houses on the lots, which are identical in style, with subtle difference in chimney design and gable decoration.
17. *Langleas* (66 Wattletree Rd) was built in 1868 as a brick cottage of 4 rooms with trellis summer house and wash house for retired master mariner, David Gillespie.
18. In 1882, the Mount Pleasant Estate created Inverness Ave, St Georges Rd, St James Rd and The Terrace. In 1891, a mirror image pair of two-storey brick houses, each with 8 rooms was built at 27 & 29 Wattletree Rd. In 1895, Mrs Ellen McLeod's Grammar School occupied 27 and in 1912, it was purchased by the Church of England, becoming the Vicarage for the adjacent church until it was sold in 1983.
19. In 1898, the former Primitive Wesleyan church erected in 1891 on the corner of Wattletree & Kooyong Rds became Holy Advent Church of England. On 23 April 1910, the foundation stone of the new Holy Advent on the corner of St Georges Rd was laid by the Archbishop. In 1927, architects Gawler & Drummond designed extensive alterations to convert the former church into a hall. The foundation stone (now in the gardens of Holy Advent) for the hall was laid on 3 March 1928.

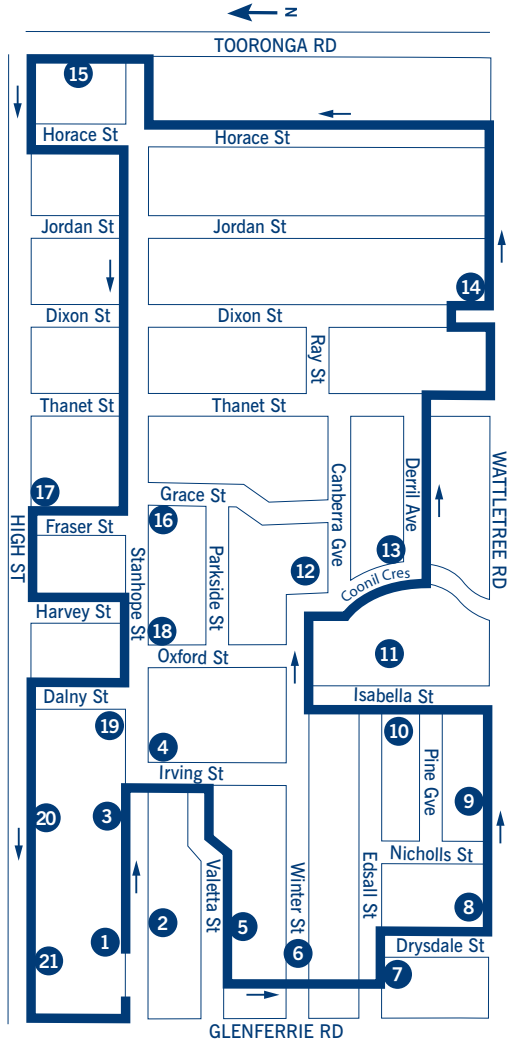
Kooyong Rd, formerly Boundary Rd, was the boundary between the two former municipalities – Malvern and Prahran – which were amalgamated in 1994 to form the City of Stonnington. The Victorian style house at 22 Kooyong Rd features decorative, incised motifs on the first floor façade and a 1920s verandah, which replaced an earlier single storey, cast iron verandah.



Holy Advent Church, 1913

20. *Carrington* (58), an Italianate style house designed by architect Alfred Dunn, and featuring a pyramidal roof over the entry porch and external window hoods, was erected for Thomas Edwin Moran in 1887. In 1876 Moran opened a grocer store in North Melbourne and in 1881, his cousin, Frederick Cato, became a partner in the business. The partnership prospered, and when Moran died in 1890, his widow Elizabeth became a partner in the business, which by then had thirty-five branches, later expanding into Tasmania and New South Wales. By 1935 there were over 160 branches of Moran & Cato, with nearly one thousand employees.
21. The foundation stone for the Wesleyan Church on the corner of Kooyong Rd and Clarendon St (formerly Canterbury St) was laid by James Munro on 5 May 1886. Elizabeth Moran laid the foundation stone for the Wesley Hall, designed by architects Haddon & Henderson, on 24 November 1928.
22. The warehouse at 14 Meryl St was a knitting factory in 1917 and in 1927 was occupied by a pastel and chalk manufacturer. Robert Thomson and his son George ran a furniture removal business from the red brick warehouses at the rear of 9 & 11 Meryl St, off Fife Pl.

3 Stanhope, Pine Hill, Winter's & Coonil Estates, Malvern



Start	Melways	Walk time
St Joseph's Church, Stanhope St, Malvern	59 C8	1.5 hours - undulating

Substantial Victorian era mansions and rows of finely decorated, boom style houses and Stonnington's most prominent and extensive Catholic precinct on 10 of the original 11 acres of Hayward's Corner Estate highlight the importance placed upon well-drained land in Melbourne. The Stonnington City Centre (formerly the Malvern Shire Hall) erected on Stonnington's highest hill (over 60 metres above sea level), the High St & Glenferrie Rd shopping strips and excellent tram network, was highly valued by early settlers.

1. On 24 November 1889, the foundation stone of St Joseph's Church was laid by Archbishop Carr. The foundation stone of the presbytery for the Vincentian Priests who had arrived in 1892, was unveiled on 1 March 1895. The Victorian style presbytery, designed by architect Augustus Andrew Fritsch, included an oratory, library, dining room, ten bedrooms, kitchen, scullery, servery and basement. On 16 February 1908, the foundation stone of the new church was blessed by the Archbishop. Opened on 27 September 1908, the church, designed by Fritsch and built by the Swanston Brothers is described as being *one of Victoria's most dramatic churches in the red brick and cement, or 'Bloody and Bandage'* manner. The renovation of the interior in 1972, removed many of the original features. The Church & Presbytery are Classified by the National Trust of Australia (Victoria).



St. Joseph's Hall,
Presbytery & Church,
c.1915

ST. JOSEPH'S CHURCH, STANHOPE ST. MALVERN.

3 Stanhope, Pine Hill, Winter's & Coonil Estates, Malvern

2. *Roma* (44), *Branksea* (46), *Coimboon* (48), *Inverleith* (50), *Darjeeling* (52), *Castledon* (54), *Hintonville* (56) were built by James Wright in 1889. The boom style houses feature heavy layers of ornamentation, projecting bays, slate roofs hidden behind the stucco balustraded parapets, semi-circular pediments and scalloped shield motifs above the house name, red, brown and cream (polychromatic brickwork) patterning beneath the elaborate cornice, and hipped cast iron verandahs. External, brown, timber Venetian blinds, hidden behind hoods at the top window sashes when not in use, have all been removed.
3. In the 1890s, the Misses Ardagh conducted St Joseph's School in the weatherboard school building behind the church. In 1897, the Sacred Heart Sisters took over the school and lived in *Clifton*, a two storey red brick house in High St, erected in 1885 opposite the Malvern Cricket Ground, which had been purchased by the Vincentian's. In 1917, the Brigidine Sisters moved into *Clifton* and took over St Joseph's Girls' School, which moved into the new, red brick building. Architect Bart Moriarty designed St Joseph's Boys' School, which was conducted by the De La Salle Brothers, and opened by Archbishop Mannix in 1941. In the 1970s, the schools were merged and conducted by the Brigidine Sisters until the mid 1990s.
4. During the 1920s, *Tiverton* (formerly *Inveramsay*), a two storey house on the east corner of Stanhope & Irving Sts, accommodated the De La Salle College boarders. From 1951 until its demolition in 1970, a girls' hostel, run by the Legion of Mary occupied the renamed *Myra House*. On the west corner was a large, two storey, Federation style house.
5. Clara Murray conducted a school at St George's Church Hall, Malvern in 1883 prior to establishing Malvern Ladies' College at *Dunellis* (16 Valetta St) in the 1890s. A school building was erected at 14 and boarders occupied an adjacent house. In 1911 the College merged with Korowa Anglican Girls' School and Miss Murray set up a hostel for the children of missionaries in Valetta St. In 1918 the Malvern Friendly Societies' Dispensary, established in 1906 in High St, Armadale, purchased 14 and added an entrance hall, clubrooms, waiting room and dispensary to the old school building. In 1924, a new Malvern & District United Friendly Societies Dispensary Hall, supper and lodge rooms, designed by architects Hudson & Wardrop, was opened by Malvern Mayor Cr Henry Matthews.

*Elizabeth & Clara Murray,
c.1890s*



6. In 1875, magistrate William Irving Winter-Irving purchased land on Glenferrie Rd and in 1881, created Winter, Irving & Oxford Sts (formerly William St) as part of the Winter's Estate. 1st Malvern Scouts, is thought to have first met in 1908 at a house in Winter St.
7. Around 1896, Caleb Jenner established a dairy on the south west corner of Edsall & Drysdale Sts later known as Cleghorn Dairy and Ice Works. From 1915–1952, Larcher's Pty Ltd ran the business as the Ideal Dairy. In 1952, the factory and stables were demolished and a supermarket erected.
8. In 1890, *Wairua* (149 Wattletree Rd) a polychromatic brick house was erected for publican John Barrand. In 1928, the flats on the corner of Drysdale St, erected for dentist Magnus Kiel replaced a house similar in style to *Wairua*.
9. In 1886, Presbyterian services were held in a timber church, designed by architects Packer & MacMillan, in Glenferrie Rd. In 1903, the building was moved to Pine Gve and its porch was replaced by an arched window. The building served as a hall and Sunday School until it was demolished in 2006. The hall and 12 Pine Gve were occupied by the junior school of Presbyterian Ladies' College ("Little PLC"), the junior school of Lauriston Girls' School ("Little Lauriston"), a kindergarten, the Embroiderers' Guild of Victoria established in 1960 and the Malvern Community School established in 1977. The arts & crafts style church in Wattletree Rd, designed by architect Robert Haddon in 1906 and Classified by the National Trust of Australia (Victoria), features traceried windows, detailed brick, plaster & timber work and wrought iron.

3 Stanhope, Pine Hill, Winter's & Coonil Estates, Malvern

10. Built prior to 1856, *Pine Hill* was a weatherboard house with plantation, cultivated land and pasture. In 1886, the property was subdivided, creating the Pine Hill Estate - Edsall, Nicholls & Drysdale (formerly Stewart St) Sts and Pine Gve with many of the houses being built by John Wright Douglas. In 1888 *Dunrobin* (9 Isabella St), a thirteen roomed, polychromatic brick, Italianate style house with stables, was erected for Police Magistrate, Charles Shuter. *Glen Avon* (19 Pine Gve) a ten roomed, cement rendered, Italianate style house was erected in 1888. At the same time, a similar style house was erected at 7 Isabella St.

11. In 1885, a two-storey Italianate style mansion, designed by architects Reed, Henderson & Smart for Arthur & Jane Langmore, was built on 20 acres on Wattletree Rd. *Coonil* included extensive gardens, stables, orchard and tennis court. In 1890, Winter-Irving, occupied *Coonil* and from around 1904, the property was leased to businessman, stockbroker Thomas Luxton MLC (Pahran Mayor 1894-1897, 1901/02 & Councillor 1892-1912). In 1910, *Coonil* was purchased by banker and finance agent, Frederick Hagelthorn MLC who subdivided the estate creating Coonil Cres, Canberra Gve, Derril Ave and the south end of Grace St. The Coonil Estate included land reserved for a bowling green and building restrictions prohibited timber houses. The terms of sale stipulated that no buildings could be erected for less than £600 in value and only single dwellings could be erected on each allotment.

In 1919, Hagelthorn's defeat in politics, combined with his dwindling finances prompted the sale of the re-named mansion *Mangoplah* to the Sisters of Mercy. In January 1920, *Mangoplah* opened as St Benedict's Hospital. In 1948, the Missionary Sisters of the Sacred Heart (Cabrini Sisters) took over the hospital and renamed it St Francis Xavier Cabrini. The foundation stone of the first building erected by the Sisters was laid by Archbishop Mannix on 16 June 1957.

*Malvern Bowling
Club, 1916*



12. On 20 October 1911, John Murray, Premier of Victoria, opened the Malvern Bowling Club and Federation style pavilion, designed by architect and club vice-president Leonard Flanagan who lived in a large, timber, block fronted house on the north corner of Thanet & Ray Sts. In 1920, the billiard room was erected and soon after, electric lights were installed over the greens. Ladies were admitted in 1959 and in 1961 a new clubhouse was opened.
13. In 1910, Samuel Hutchinson had a 13 roomed house, with copper dome over the porch, erected at 6 Coonil Cres.
14. 4 Dixon St, with the royal crown on the gable, was erected on the Stanhope Estate, subdivided in 1888 creating Stanhope, Emily, Harvey, Fraser, Thanet, Dixon, Jordan & Horace Sts. A small farm fronting Toorong Rd severing Horace & Jordan Sts between Wattletree Rd and Stanhope St, was subdivided in 1912 as the Central Malvern Tramway Estate. The tuck pointed brick façades and timber structures of *Hymettus* (227 Wattletree Rd), named after 1898 & 1901 Caulfield Cup winner; *Amberite* (229) named after 1897 Caulfield Cup and Victoria Darby winner; *Wait-a-bit* (231) and *Bobadil* (233), named after 1897 Caulfield Guineas and Australia Cup winner, were erected in 1889.

3 Stanhope, Pine Hill, Winter's & Coonil Estates, Malvern

15. *Clare* (175 Toorong Rd) and *Singapore* later *Kaduwela* and *Llanfyng* (173) with elaborate, cast iron fences, were erected in 1891 for Edward Shears, who was living in a similar, Italianate style house he commissioned at 16 Sorrett Ave, Malvern. Builder, George Sandow who occupied one of the houses, may have built both, as he also built many of the houses in Sorrett Ave.
16. Builder James Wright built the boom style houses at 86 & 88 Stanhope St in 1889 and built his own house, the most elaborate of them all, on the corner of Stanhope & Grace Sts.
17. Woodcote Girls' High School run by the Misses Irvine, occupied a two storey house on the east corner of High & Fraser Sts from 1899-1905. A tennis and croquet lawn was available for use by the pupils.
18. *Hadley* (76) a Hawthorn brick house with stables, was erected in 1889 for box maker, Thomas Frame. From 1893, *Hadley* became a Ladies' College and kindergarten conducted by the Misses Wilson with classes in pianoforte, violin, singing, drawing, painting, music theory, French, German, Latin, Greek, geometry, and algebra. Gymnastics and callisthenics were conducted in a large, timber gymnasium. Fees were charged for pens, ink, copy books, blotting paper, pencils and examination papers. Boarders were expected to bring 4 sheets, 4 pillow cases, 1 dressing gown, 6 towels, 4 serviettes and 1 rain-cloak.
19. In 1888, *Altioria* (later *Manresa*), a two storey house with stables was erected on the west corner of Stanhope & Dalny (formerly *Emily*) Sts. In 1929, the De La Salle Brothers relocated their school to *Manresa* and within months, the Tower Building, designed by Moriarty, was erected. *Manresa* was remodelled by Moriarty into a monastery and was demolished in 1974.
20. *Wynduk* (1310 High St) is the sole survivor of what was an elaborate row of villas, erected opposite the MCG in the 1890s. *Calimo* also known as *Loretto* (1312) with projecting corner bay with candlesnuffer, *Clarendon* (1314) *Carlownie* (1316), *Morven* (1318), *Kirk Bank* (1320), and *Berringamah* (1324-1326) a large federation style house, were all demolished in the 1960s.

*Manresa, De La Salle
College, c.1960*

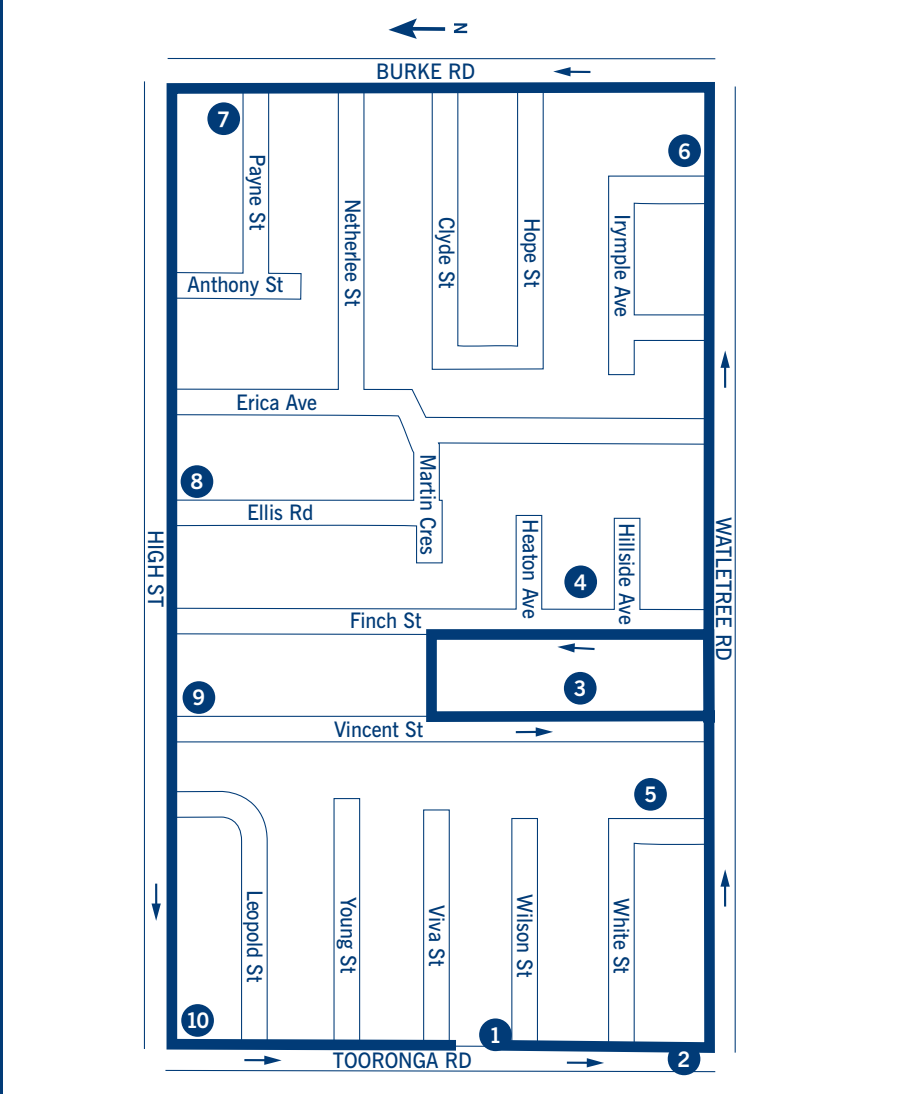


21. In 1897, the Sisters of the Sacred Heart moved into *Clifton*, and had a two storey, red brick building erected to accommodate the boarders. In 1917, the Brigidine Sisters moved into *Clifton* and opened Kildara Girls' School. On 23 October 1931, a new Chapel and two storey cloister surrounding the original school building, designed by Fritsch were opened by Archbishop Mannix. During the 1960s the school shared its facilities with Christ College – a Catholic Teachers' College. In 1992, the convent and school closed and the buildings were demolished soon after. Menzies of Malvern now occupies the site.

*Clifton and Convent
of the Sacred Heart,
c.1900*



4 The Olives & Arama Estates, Glen Iris



Start	Melways	Walk time
Viva Street Reserve, Tooronga Rd, Glen Iris	59 9E	1.5 hours - hilly

The construction of electric tramways along High St and Wattletree Rd (formerly Wattle Tree Rd) in the 1910s stimulated the subdivision of farmland into housing allotments. Burke Rd, formerly Charleville Rd, was re-named to commemorate the explorer O'Hara Burke, of Burke and Wills. Tooronga Rd, formerly Nash Rd, was named after Richard Nash, first Hon. Secretary of the Gardiner Road Board.

1. Jacob Henry Young, a member of the Gardiner Road Board/Shire Council in the 1860s and 1870s, owned land on Tooronga Rd between Leopold (formerly Cross St) & White Sts. Soon after Young, Viva and Wilson Sts were created as part of the Malvern Tram Estate in 1910, the Malvern Council purchased six allotments on Tooronga Rd and began planting canary island palm trees to form the Viva Street Reserve.
2. In the 1860s John Favel Green purchased 22 acres of land at the corner of Wattletree & Tooronga Rds and soon after had a 2 roomed weatherboard house built. Merchant, Reuben Horatio White purchased the property in 1881 and named the house *The Olives*. White St was created with the subdivision of part of the estate in 1888. *The Olives* was demolished in 1938. In the 1920s, a butcher, confectioner, post office, estate agent, boot maker, grocer and pastry cook occupied a number of new shops on the north & south sides of Wattletree Rd near Tooronga Rd.



*Gertrude Ransom
and daughter Marjory,
The Olives, c.1930*

4 The Olives & Arama Estates, Glen Iris

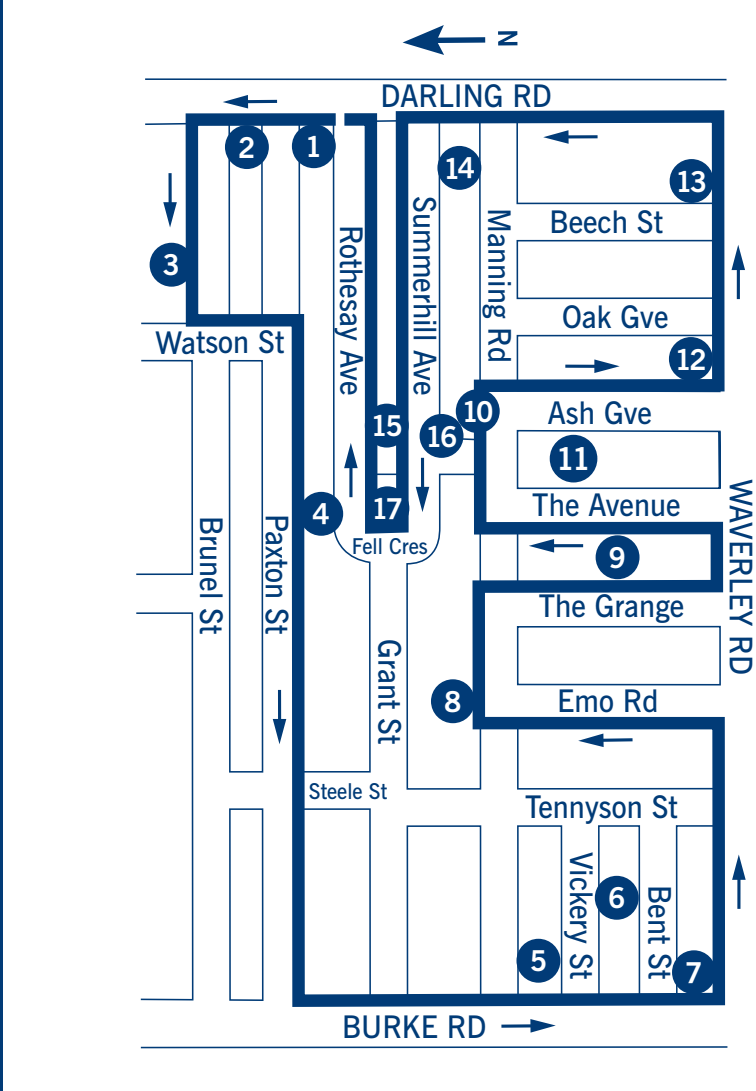
3. In 1911, the southern ends of Vincent & Finch Sts were created as part of The Olives Estate. The estate features a number of Edwardian style houses and Federation style bungalows with terracotta tiles, first floor attics, large porches/sleep-outs and first floor balconies. 144 Finch St and 349 Wattletree Rd are Old English style houses with clinker brick façades.
4. In 1878, Nicholas Hill a butcher, his wife Susan Lacey and their nine children moved to *Hillside*, which was built on 5 acres in the 1870s. In 1912, Hillside & Heaton Aves and part of Martin Cres were created in 1912 as part of the Hillside Estate. In 1939, *Hillside* was demolished.
5. Bertram Crosbie Goold, Town Clerk of the City of Malvern 1922-1944 lived in a house at 10 Vincent St, now demolished. In 1920, architect Arthur Plaisted designed a twelve roomed, roughcast brick house and surgery with large gabled roof for Dr A.H. Seeleymeyer on the west corner of Vincent St which was demolished in 2003.
6. In 1858, William Fawcett purchased 9 acres at the north west corner of Burke & Wattletree Rds and had a brick and weatherboard house erected. In 1889, John Hambleton Kitchen, a former grocer and candle maker from England, purchased *Calimo* (later *Arama*). Soon after John arrived in Melbourne in the 1850s, he commenced making candles and within thirty years, became Australia's chief manufacturer of candles and soap. John's sons, John Ambrose and Frederick later worked for the family company, J Kitchen & Sons. In 1962 the company merged with Lever Bros. forming Lever and Kitchen and in the 1990s merged with Rexona.

In 1907, Irymple Ave was created, when the Arama Estate was subdivided. The sale notice in *The Age* for the estate stated that *The land is finely situated, commanding a view of the Glen Iris Valley ... A sports ground will be laid out, possibly with swimming baths and tennis courts, and gardens will probably be planted. It is expected that the park will form one of the finest public reserves around Melbourne.* A second sale of the Arama Estate was named Central Park Estate, and the subdivision reduced the size of the main road blocks.

The first tram left the Malvern Tram Depot, on 30 May 1910 and travelled along Glenferrie & Wattletree Rds to the terminus at Central Park. The first shop, a grocer, was built on the west side of Burke Rd in 1915. A downturn in building activity accompanied the war years but by 1918, five shops had been erected in Burke Rd, north of Wattletree Rd. Early businesses included a hairdresser, tobacconist, estate agent, confectioner, draper, two newsagents, grocer, chemist, carpenter and builder, pastry shop, fruiterer, butcher and hay & corn store. The former State Savings Bank on the north west corner of Irymple Ave was designed by W.H. Tunbridge in 1927. Note the two mortar & pestles on top of the former Hull's Pharmacy (153 Burke Rd) and the row of moderne style shops (159-163). From 1936–1966, the Plymouth Brethren occupied a hall at 163 Burke Rd.

7. The first Methodist church service in Glen Iris was held at *Belmont* (Belmont Ave, Glen Iris) on 19 January 1913. Land for a permanent church was purchased on the north corner of Burke Rd and Payne St for £461, and the first service in the new timber church was held on 17 May 1914. It was proposed to erect a new church in 1919, but due to the shortage of material following WWI, it was decided to extend the existing building. The foundation stone of the new brick church was laid by Frederick Cato on 3 May 1924. In May 1937, the church was rendered and in 1984, the Uniting Church closed and all the buildings were demolished.
8. Ellis Rd (formerly Queens Rd and Victoria Rd), Martin Cres (formerly Regal Ave) and the northern end of Erica Ave (formerly Albert Rd and Victor Rd) were created in 1918. The large bungalow attic style house on the east corner of High St and Erica Ave features an unpainted rendered façade and clinker bricks.
9. The northern ends of Finch & Vincent Sts (formerly St Vincent St) were created in 1886. The bungalow style house on the east corner of High & Vincent Sts features a large porch, unpainted rendered façade and clinker bricks used as highlights around the windows and doorways.
10. In March 1914, the tram line along High St was extended from Tooronga Rd to Malvern Rd. In 1926, architects Godfrey & Spowers designed the new Ideal Dairy/Associated Dairies (later Pauls Victoria Ltd) complex on the south east corner of Tooronga Rd & High St which was demolished in the 1980s.

5 Great Malvern Park, Tennyson Park & Triple Railway Station Estates, East Malvern



Start	Melways	Walk time
Dairy Park, Darling Rd, East Malvern	59 J12	2 hours - hilly

A few large houses fronting the main roads were scattered throughout the area bounded by Burke, Waverley & Darling (formerly Rutherford's Rd, named after Gideon Rutherford the first Chairman of the Gardiner Road Board) Rds and the line of the rear boundary of the present day houses on the north side of Brunel St. Although most of the development occurred during the 1920s, small pockets of houses from the 1880s and 1890s still remain as well as remnant former gas lamps along Darling Rd, now resembling bollards.

1. In 1930, William and Mable Rose moved their dairy business from Preston to a brick shed at the rear of 18 Craigmere St, near Darling Railway Station. The Rose's sought the best jersey cow farmers to supply milk for their bottling operation, which proved a popular policy with their customers. In 1934, the dairy moved to Darling Rd, where a new Cranbourne Dairy and house for the Rose's were erected. During the 1937 polio epidemic the Rose family installed a pasteurisation plant and the dairy subsequently won the first 'Clean Milk and Dairy Competition' from the Department of Agriculture. In 1939, the business was sold to Richard Dixon who expanded the business by purchasing several shops between the dairy and Paxton St. The dairy closed in the 1970s. The Dixon Dairy Group, a local residents' group, lobbied for the site to become a park. The State Government purchased the site and used it in its negotiations with the Malvern Council to partly compensate for loss of open space, during construction of the South Eastern Arterial Road Link. Dairy Park was opened by Malvern Mayor, Cr George Pepperell on 26 November 1988. (See Plaque)



Cranbourne Dairy, c.1937

5 Great Malvern Park, Tennyson Park & Triple Railway Station Estates, East Malvern

2. Note the intricate leadlight glass in the shop front on the south corner of Brunel St and Darling Rd and the ram and bull's heads in the stained glass of the former butchers shop on the north corner.
3. In 1910, the Great Malvern Park Estate created Brunel & Paxton Sts between Watson St and Darling Rd. *Wurrong* (93 Brunel St) is a Victorian style house erected in 1891 and features a Hawthorn brick façade and unusual large porch.
4. *Taviuni* (56 Paxton St), erected in 1906 for Walter Cazaly, is an Edwardian style house with art nouveau patterned glass; complex terracotta roof; corner bay window topped with a candlesnuffer; a high weatherboard dado; and a roughcast upper façade featuring the house name.
5. On 15 March 1891, a small timber church was opened on land east of the entrance to Ardrrie Park on Waverley Rd. In 1896, as a result of a generous offer made by William Knox, land was purchased on the east side of Burke Rd and the timber church was relocated to the new site. In 1902 a small timber hall was erected behind the church. The Rev John Mackenzie laid the foundation stone for a new hall on 29 July 1939 on the site of the old timber church, which had been demolished in 1937. The new cream brick hall was designed by Architects Reid & Pearson and erected by Archer Brothers for £5830.
6. In 1885, the Tennyson Park Estate was subdivided with allotments fronting Burke, Waverley & Manning (west of Tennyson St) Rds and Tennyson, Bent & Vickery Sts.
7. James Voysey (Malvern Shire President 1899/1900 and Councillor 1896-1906) and his wife lived at the timber, block fronted *Merrimu* (34 Burke Rd). At a meeting of the Malvern Council in March 1899, Voysey made the first official representation for the need for swimming facilities to be provided by the municipality. Voysey established a choir at the Ewing Memorial Church in 1890.



James and Mrs Voysey, Merrimu, c.1900

8. On 13 December 1891, a new church was opened for the parish of St Stephen's Oakleigh, in Manning Rd (formerly Moore St). In 1917, the church was destroyed by fire. The foundation stone of the present church was laid by Archbishop Mannix on 4 April 1920 and the church was opened on 10 October 1923. St Mary's is a memorial church commemorating those who lost their lives in WWI. The church was designed by architect Bart Moriarty and built by Robert Harper. The Edwardian, bungalow style presbytery was designed by architect P.J. O'Connor in 1931. The foundation stone for St Mary's Primary School was laid by Archbishop Mannix on 30 June 1918. Prior to this, classes were conducted at the rear of the church. The school was enlarged in 1930 and subsequently redeveloped over the years.

5 Great Malvern Park, Tennyson Park & Triple Railway Station Estates, East Malvern

9. In 1856, a one room, weatherboard house was erected for George Clutton fronting Waverley Rd. By 1871, there was a brick house of four rooms on 88 acres between Burke & Darling Rds. In 1885, land surrounding *Emo*, now with eleven rooms and offices, was subdivided creating Manning Rd, The Avenue and The Grange. *Emo* remained on a reduced allotment fronting the new streets and surrounded by newly erected Victorian style houses in The Avenue and The Grange. *Emo* was demolished around 1920 and the land sold with new houses erected at 20-14 The Grange and 22-28 The Avenue.
10. Architect Arthur Fisher designed 127-133 Manning Rd in 1890. Three of the houses feature timber fretwork, steeply pitched slate roofs with unusual front and side gables, projecting hip roof over the bay windows and intricate leadlight glass.
11. Thomas W Pockett was born in England in 1857 and at an early age, obtained work in a nursery and later as a foreman gardener on an English estate. It was during that time that he won his first prize for chrysanthemums at a Cheltenham flower show. After Pockett and his wife Louisa Bayliss migrated to Australia in 1882, he became the head gardener at *Kenley*, Kooyong Rd, Toorak where he won the first prize offered by the Horticultural Improvement Society of Victoria “for the best arranged and best kept gentleman’s garden within five miles of the Melbourne GPO”.

Pockett lived on the corner of Malvern Rd and Shaftesbury Ave, Malvern where he grew thousands of chrysanthemums on vacant blocks surrounding the house *Hatherley*. In 1888 when Pockett relinquished his position at *Kenley* to concentrate on his chrysanthemums, he was approached by Malvern Council to prepare a plan for a Malvern Gardens.

Pockett was then appointed Curator of Parks and Gardens for the Malvern Council, a position he held for thirty years. Pockett also designed Central Park and was responsible for the planting of many street trees. Pockett achieved world acclaim in the breeding and growing of chrysanthemums, and displays of his prize-winning blooms became a feature of these gardens. Around 1913, Pockett moved to Manning Rd then 15 Ash Gve (formerly Pine Gve) where he continued to grow his award winning chrysanthemums in the adjacent vacant block.

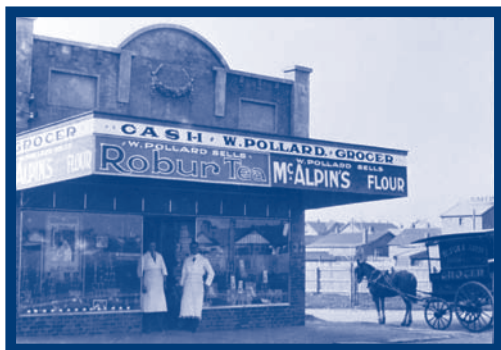
12. *St Elmo* (2 Ash Gve), designed by Architect Arthur Fisher, was erected in 1890 on land extending to Oak Gve. The National Trust of Australia (Victoria) considers *St Elmo* to be the first Australian, fully developed example of the Nesfield/Shaw 'Old English' style, in Australia. An illustration of the proposed house appeared in the Building and Engineering Journal, 28 June 1890. In 1921, The Grange School, South Yarra, a boys' preparatory school established by the Misses Turner in 1867, relocated to the renamed *Westford*. Boarders were accommodated in *Westford* and in 1922 a weatherboard classroom was erected. The school closed in 1929.

A scout group formed, at The Grange School in 1926, became the 9th Malvern Scout group. When the school closed, the scouts continued to use the classroom facing Oak Gve. The land in Oak Gve was transferred to the Scouting Association in 1937 and a new brick hall was built in 1965. Some time after the 9th Malvern group ceased to operate, 13th Malvern moved from Burke Rd to Oak Gve. In 1991 the old timber hall was demolished and the 1960s building was extended in 1992.

5 Great Malvern Park, Tennyson Park & Triple Railway Station Estates, East Malvern

13. In 1889, the sale of the Triple Railway Station Estate advertised as having 'Business, Mansion and Villa sites', created Grace St (later Fern St, now Beech St) and housing allotments along the east end of Manning Rd and the east side of Oak Gve (previously created with the subdivision of the Emo Estate). Land fronting Waverley Rd east of Oak Gve, and Darling Rd south of Manning Rd was divided into sites suitable for commercial purposes. No building activity occurred until 1913, when the tram line along Balaclava & Waverley Rds from Hawthorn to Darling Rds was opened. By 1918 only two shops had been built in Waverley Rd and by 1926 a variety of traders and storekeepers, including a bootmaker, ironmonger, estate agent, butcher, milliner, grocer, produce merchants, draper, hairdresser, chemist, fruiterer and fuel merchants had established premises in Waverley Rd.

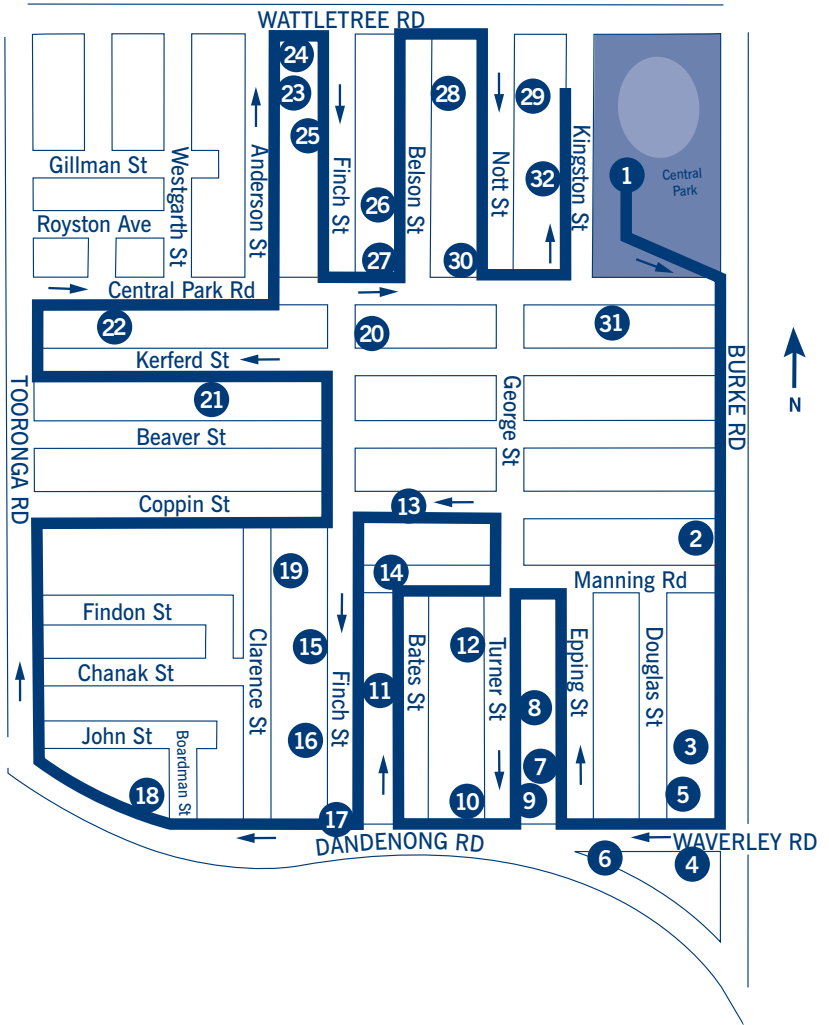
William Pollard established a grocer store on the west corner of Beech St which features an ornamental pediment with garland. In 1928, David Hyslop (Malvern Mayor 1936/37 and Councillor 1929-1951) designed and had built the two storey shop and residence on the east corner of Beech St. David Armstrong of Armstrong & Kroger real estate, a local designer/builder and the father of Ted (Edward) Armstrong (Malvern Mayor 1961-1963 and Councillor 1955-1974), ran the business from the Terminus Estate Agency at 336, in the 1920s. Miss A.B. Burrow had architects Harry J Little and Geoffrey H Bottoms design a library at 324 featuring modern style lettering in the parapet. The two storey former State Savings Bank on the east corner of Fisher St was designed by A & K Henderson in the 1930s.



William Pollard's Grocer, c.1920

-
14. Note the row of Old English, Spanish Mission and Bungalow style houses at 109-125 Darling Rd featuring clinker and glazed bricks and bay windows with leaded glass in geometric patterns.
 15. Largely at the instigation of Matthew Searl (Malvern Councillor 1926-1929), the Education Department purchased land east of Lloyd St between Rothesay Ave & Summerhill Rd for £2,749 on 20 August 1920. On 21 October 1923, the southern half of the Lloyd Street Central School building, erected at a cost of £10,966, was opened by the Minister for Education, Sir Alexander Peacock. When the school opened, there were fifty students per class, from first to eighth grade and within the first eight months, the number of pupils had increased from 400 to 650. In 1927, the northern wing was opened, to accommodate the 950 pupils. The schoolyard sloped down the hill from west to east and an avenue of mature elm trees, cut the playground in two. In 1988, Year 7 & 8 classes ceased at Malvern East Central School, and soon after, the school reverted back to its original name.
 16. In 1925, Baptist Church Services were held at Lloyd Street Central School. On 8 October 1927, the foundation stone of the Darling Baptist Church, opposite the school was laid. In 1955, architect J.H. Parr designed a new church. The Church closed in the 1990s and all buildings were demolished.
 17. In 1912, the Summer Hill Estate was subdivided creating Summerhill and Rothesay Aves, Fell Cres and Lloyd St (formerly Osborn Rd). 5 Lloyd St is a very large, timber Edwardian Bungalow style house with a large slate roof, first floor balcony, intricate leadlight glass and unusually intricate and detailed flower motifs in the verandah frieze. 1 Fell Cres is a large, two storey bungalow style house. 1 & 7 Rothesay Ave features a large porch with curved clinker brick arch and 3 is a bungalow style house with exaggerated stone piers.

6 Gascoigne & Waverley Estates, East Malvern



Start	Melways	Walk time
Conservatory, Central Park, Kingston St, East Malvern	59 G10	3 hours - flat

The large allotments of the Gascoigne Estate (bounded by Tooronga, Wattletree & Burke Rds and Anderson & Coppin Sts), planned by Thomas Bingham Muntz (Prahran Mayor 1885/86 and Councillor 1883-1888 & 1889-1893 and Engineer for both Malvern and Prahran Councils) for the Gascoigne Land Company was first advertised for sale in March 1885. The smaller allotments of the Waverley Estate (bounded by Burke & Waverley Rds and Coppin & Finch Sts) were released in 1891. The financial crash of 1891 virtually froze development on these estates and allowed the Melbourne Golf Club to open a course over much of the estates. Development recommenced when the economy improved and with the opening of the Wattletree Rd tram in 1910 and the Waverley Rd tram in 1913.

1. In 1906, Malvern Council purchased 18 acres on the corner of Wattletree & Burke Rds for £5,000. In 1908, trees were planted under the direction of the Council's curator Thomas Pockett and fences were installed to keep out straying stock. In 1911 a kiosk with refreshment room and accommodation for a caretaker, was built on the corner of Wattletree & Burke Rds. A supper room was later added and dances, meetings and receptions were held at the kiosk, until it was demolished in 1973. The 1916 timber band rotunda was demolished in 1951. In the 1920s, Curator Francis Reeves redesigned the gardens to include curving paths, a conservatory built on an artificial mound, and a marble fountain donated by Malvern Mayor Cr Harry George Wilmot for the sunken garden. In the 1990s the conservatory was restored (See Plaque) and a replica fountain was erected following the disappearance of the original. The obelisk listing the names of the Malvern soldiers who died during WWI, was re-located to the park in 1992. Note the marble drinking fountain presented by Oliver Gilpin.



Central Park Bandstand, c. 1920

6 Gascoigne & Waverley Estates, East Malvern

2. In 1896, the Ewing Memorial Presbyterian Church on Waverley Rd near Ardrrie Park was relocated to the east side of Burke Rd, south of Manning Rd. In July 1910, John Mark Davies of *Valentines* laid the foundation stone of a new church on the corner of Burke Rd and Coppin St. The church, designed by architects H.W. & F.B. Tompkins, was opened in March 1911. In 1919, the offer by Mrs Stodard to give £2000 to the parish to finance a new manse (76 Coppin St) in return for an annual interest payment of £100 for the remainder of her life was accepted.
3. Congregationalists held services in a building in Waverley Rd from 1890. In 1905, a timber church was erected in Burke Rd, which was replaced by a brick church in 1916. The [Alfred Moreton] Wharington Memorial Hall, named in honour of Sunday School Superintendent from 1897–1921, was designed by architects J.S. Edwards & C.E. Hocking in 1928. Following the sale of the site to the Malvern Council in 1978, the memorial window from the Congregational Church, Glenferrie Rd, Malvern installed in the church in 1966 was moved to Ewing Memorial Church. The Malvern Drama Group formed in 1958, renamed the Malvern Theatre Company in 1971 occupy the Malvern Community Arts Centre, opened by Mayor Cr Max Dumais on 16 October 1982.
4. The former Waverley Theatre (96 Waverley Rd), designed by Cowper, Murphy & Appleford and built by Hansen & Yunken with elaborate art deco foyer and auditorium accommodating 760 in the stalls and 390 in the dress circle opened on Boxing Bay 1936. The theatre closed in 1958 and in 1963 was converted into a recording studio. The ABC leased then purchased the building in 1972 for use by its orchestra prior to it being converted into apartments in 2000.
5. Note the stained glass, brass framework, tiles and pressed metal on the bungalow style shops on Waverley Rd, east of Douglas St erected in 1927.

-
6. Soon after the sand-hills and swamps were cleared to create the Caulfield Racecourse in 1857, publican Rody Heffernan purchased 5 acres on the corner of Main Dandenong & Waverley (formerly Scotchman's Creek) Rds and had a single storey brick hotel with eight rooms, stables and a cellar erected. In 1878, 'beer house keeper' John Graham, purchased the property and kept cows and other livestock in the adjacent paddock. In 1926, the second storey was added to the Racecourse Hotel and a new Spanish Mission style façade was created.

 7. Methodists held services in Queens Hall, opposite Caulfield Railway Station in 1906 until a timber church was erected in Epping St the following year. On 12 November 1921, the foundation stone of the Peace Memorial Methodist Church, named to commemorate the end of WWI, was laid. The arts & crafts style church, designed by architects Arthur North & Louis Williams and Classified by the National Trust of Australia (Victoria), closed in 1976 and two windows were relocated to Ewing Memorial Church. In 1983, St Catherine's Greek Orthodox Church relocated from the corner of Burke & Moama Rds to Epping St. The copper clad towers were added in 2001.



*Associate Members of the
(Royal) Melbourne Golf Club,
Turner St, c. 1890*

6 Gascoigne & Waverley Estates, East Malvern

8. In 1891, the newly established (Royal) Melbourne Golf Club, were permitted by the mortgagees of the Waverley and Gascoigne Estates to use their land as a golf course. The 18 hole course, was taken over by the Caulfield Golf Club (later the Metropolitan) in 1901. The speculative Italianate style house at 16 Turner St was used as the Clubhouse and 9 was leased for the associates and caddies. As development occurred, the course continued to be realigned around the new houses until the club moved to Oakleigh in 1909.
9. In 1901, a brick shop, dwelling and stables topped with mansard roof and cast iron balustrade, was erected on the corner of Waverley Rd & Turner St for William Howarth who ran a grocer and fuel store until 1912 when he established a boot shop in one of the four new shops erected adjacent to his existing business.
10. *Charnwood* (41-43 Waverley Rd), designed by Leslie Reed and *Gracedieu* (37-39) erected in the 1930s, feature window hoods, planter boxes, geometric patterns in the windows and garages off the rear lane.
11. In 1892, brothers Peter & William McIntyre became members of the Melbourne Golf Club and in November 1893, William won the Club Championship. In 1894, *Leven* (9 Bates St) and *East View* (11), each of 13 rooms were erected for the McIntyre's.
12. *Harleston Firs* formerly *Durrah* and *Illistron* (10 Manning Rd), a Queen Anne style house erected in 1905, was occupied by Kent Private Hospital from 1942-1970s. *Finchlea* (17), erected in 1910 features a complex roof with a variety of gables, dormers and projecting bays.
13. 47 Coppin is a rendered, Victorian style house erected in 1885 and *Melville* (45), erected in 1891, features polychromatic brickwork. 43, 39 & 37 are a row of Old English style, interwar villas designed by David Armstrong of Armstrong & Kroger Real Estate, who was a local designer/builder.

-
14. *Larnokk* (50 Finch St), an Italianate style house, was erected in 1886.
 15. Architects Ussher & Kemp designed the Queen Anne style *Thelema* (33), *Moanga* (31), *Ingleburn* (27), *Dunoon* (25), *Eblana* (23) and *Merridale* (21) in 1899 for William Knox. Knox was elected to the first Australian Parliament in 1901, founding secretary of Broken Hill Proprietary Company (BHP) and Malvern Shire Councillor (1892-1895 & 1902-1910) & Shire President (1893-1895). In 1903, Ussher & Kemp designed *The Gables* (15), *St Ives* (11) and *Boree* (9).
 16. On 30 November 1883, the timber church of St John's was opened in Derby Rd, Caulfield. From 1884-1885, classes for the Caulfield Racecourse School (later Malvern Primary School) were conducted in the church. In 1888, the building was moved to Finch St and the following year, a new brick church and vicarage was opened. In 1907, a new brick hall was erected and the timber hall was relocated to High St, Glen Iris. The foundation stone of a new church was laid on 18 December 1920 and the gothic style St John the Evangelist Church, designed by Purchas & Teague was opened in 1922. In 1922 the hall was extended to Clarence St to accommodate a kindergarten and in 1925, the vicarage was rendered.
 17. Note the unusual shop and residence at 1 Finch St. In 1894, the Malvern and Caulfield Councils and the Metropolitan Fire Brigade Board agreed for the Board to erect a fire station in the wide tree reserve in the middle of Dandenong Rd. The fire station closed in 1918 and the Malvern Council purchased the property for £75. Prior to the building being demolished in the 1980s for the widening of Dandenong Rd, it had been used as a baby health centre and clubrooms for the Returned Sailors and Soldiers Imperial League of Australia (RSSILA).

6 Gascoigne & Waverley Estates, East Malvern



Turf Club Hotel, 1880s



Turf Club Hotel, c.1923

18. In 1896, Thomas Burns opened a saddlery in Dandenong Rd. From 1922 George Victor Mulder, an apprentice harness and saddle maker, ran and later bought the business. During WWII the business was declared an essential industry for the war effort and military kit bags, water bags, life jackets, tents, hospital marquees, gun covers and pouches were manufactured. When George died in 1974, his two sons Victor and Terry continued to operate the business.

In 1871, a single storey, weatherboard hotel was erected on Dandenong Rd for John George Heywood (Chairman of the Gardiner Road Board 1870, Gardiner Shire President 1871 & Malvern Shire President 1881–1883). In 1923 a new two storey bungalow style hotel replaced the earlier building. Dan Murphy's liquor store occupied the former Turf Club Hotel until it was demolished in 2007.

19. In 1897, Ellen Craig opened East Malvern High School and kindergarten for girls, in St John's Parish Hall. From 1905-1921 Ellen, her mother and sisters operated Aldworth Girls' Grammar boarding school on the south west corner of Finch & Coppin Sts. In 1913, 30 Coppin St (cnr Clarence St) was erected as classrooms.

-
20. In 1896, Miss K Gregory established Warwick Girls' School in Manning Rd before it was moved to the north east corner of Finch & Kerferd Sts in 1905 by Misses Adelaide & Ivy Turner. The kindergarten to leaving, boarding and day school closed in 1942 when the RAAF commandeered the buildings.
 21. Malvern Grammar School was established by Charles McLean in 1891 at St John's Parish Hall. The school moved to McLean's home at 16 Kerferd St and then to *Valentines*, Willoby Ave, Glen Iris in 1924.
 22. *Yallabee* (8 Central Park Rd) was erected in 1887 for Alexander McKinley MLA (Malvern Councillor 1885-1920, Shire President 1890-1893, Mayor 1900/01, 1910/11 & 1918/19) proprietor of several newspapers including *Punch* and *Bulletin*, special magistrate for the Children's Court and President of the Children's Welfare Association. Most of the two storey cast iron verandah has been removed.

Yallabee, c.1890



6 Gascoigne & Waverley Estates, East Malvern

23. *Rosarden* (36 Anderson St), an Old English style house designed by Arthur Plaisted in the 1920s features a dominant gable, medieval brackets and rustic timber bargeboards.
24. David Armstrong designed the row of Old English style houses at 318 Wattletree Rd in the 1930s.
25. The Queen Anne style house at 113 Finch St was designed by architect Sydney Herbert Wilson (Malvern Mayor 1913/14 & Councillor 1905-1923) in 1901. Alexander Cameron, Malvern Councillor (1902-1908), Chairman of the Prahran & Malvern Tramways Trust (1907-1919) and Chairman of the Melbourne and Metropolitan Tramways Board (1919-1935) lived at *Ellamine* (91), a Queen Anne style house erected in 1899.
26. St Christopher's College was established in 1945 and began with a two-year course for women and girls in theology, religious education and youth leadership. When the College closed in 1965, it had been operating from *Werai* (92) erected in 1890 for organ builder Arthur Hobday, and *Heanor* (98).

Kia Ora, c.1911



-
27. In 1895, Oliver Gilpin used his inheritance to establish a drapery business, which he moved to *Kai Ora*, on the north side of Central Park Rd between Finch & Belson Sts in 1910. The two acres included a tennis court, artificial lake, fernery, summer houses, croquet/bowling green and extensive warehouses. By 1930, there were over ninety stores in Australia, all managed by women, on a strictly cash basis. When Gilpin died in 1942, his business was acquired by Foy & Gibson and later by G.J. Coles for £1,250,000. In 1973, *Kai Ora* and the warehouses were destroyed by fire.
 28. The Old English style house at 36 Belson St features a prominent timber gable. The two storey bungalow at 326 Wattletree Rd was designed by architect Howard Lawson in 1921. Architect Ole H Jorgensen designed the stone house at 328 adjacent to the Spanish mission style houses (330 & 332).
 29. In the 1920s, *Dimoia*, a two storey house erected in 1885 on Wattletree Rd, between Nott & Belson Sts, included a private 9 hole golf course on the surrounding four acres. From 1927, the land was subdivided and sold to architect Arnaud Wright who designed many of the houses. In 1931, Architect Leslie Reed designed 29 featuring intricate gables.
 30. *Clovelly* (33 Central Park Rd), a Federation style house with gothic style verandah posts, erected in 1890 included a drawing, dining & morning rooms, three bedrooms, two maids' rooms, two bathrooms, fowl houses and a tennis court on over 1.4 acres.



Dimoia, c. 1920

6 Gascoigne & Waverley Estates, East Malvern

31. In 1937, the Landy family moved to 60 Central Park Rd, designed by architect R.M. King in 1925. John Landy, who used the Central Park oval as his training venue, set numerous world records and won two medals - a silver at the 1954 Empire Games for the mile and a bronze for the 1500 metres at the 1956 Melbourne Olympics, where he also read the Olympic Oath. In March 1997, the oval at Central Park was named in his honour. (See Plaque)
32. In 1912, architects Inskip & Kemp designed *Coora* (3 Kingston St). In 1908, architects Ussher & Kemp designed 5. In 1897, architect Arthur Cutler designed 9. *Inverdate* (13) featuring a candlesnuffer was erected in 1907. In 1916, architect Godfrey Spowers designed 17. 19 was erected in 1912.

Wattletree Rd Tram Terminus, c.1914





Front cover photo:
Malvern Hill Hotel, 1884

Back cover photos:
Methodist Church, Burke Rd, c.1930
Woodmason's Dairy, c.1915

